



JIANG DING
TECHNOLOGY CO.,LTD.

FORGING & PRESSING



CONTACT US



www.jdforging.com

公司簡介

About JIANG DING

We focus on forging customized products of aluminum alloy and steel materials. Our products have expanded from the bicycle parts market to the auto locomotive parts market, from the development and design of forging dies to CNC processed products, with vertically integrated services to meet the different needs of customers.

將頂科技專注於客製化的鋁材質鍛造產品;

我們所服務的產業別含括汽車/機車/電動 輔助車/自行車... 等等;

從鍛胚產品設計的溝通至 CNC 製程需求,

甚至是更多樣性的客戶要求都能夠滿足。



台灣總部 /Taiwan Headquarter

- >2008年創立/ Established in 2008
- >廠區面積2,000平方米/2,000SQM
- >員工50位/50staffs



惠州工廠 /Hui Zhou Factory

- >1992年創立/ Established in 1992
- >廠區面積10,000平方米/10000SQM
- >員工100位/100staffs

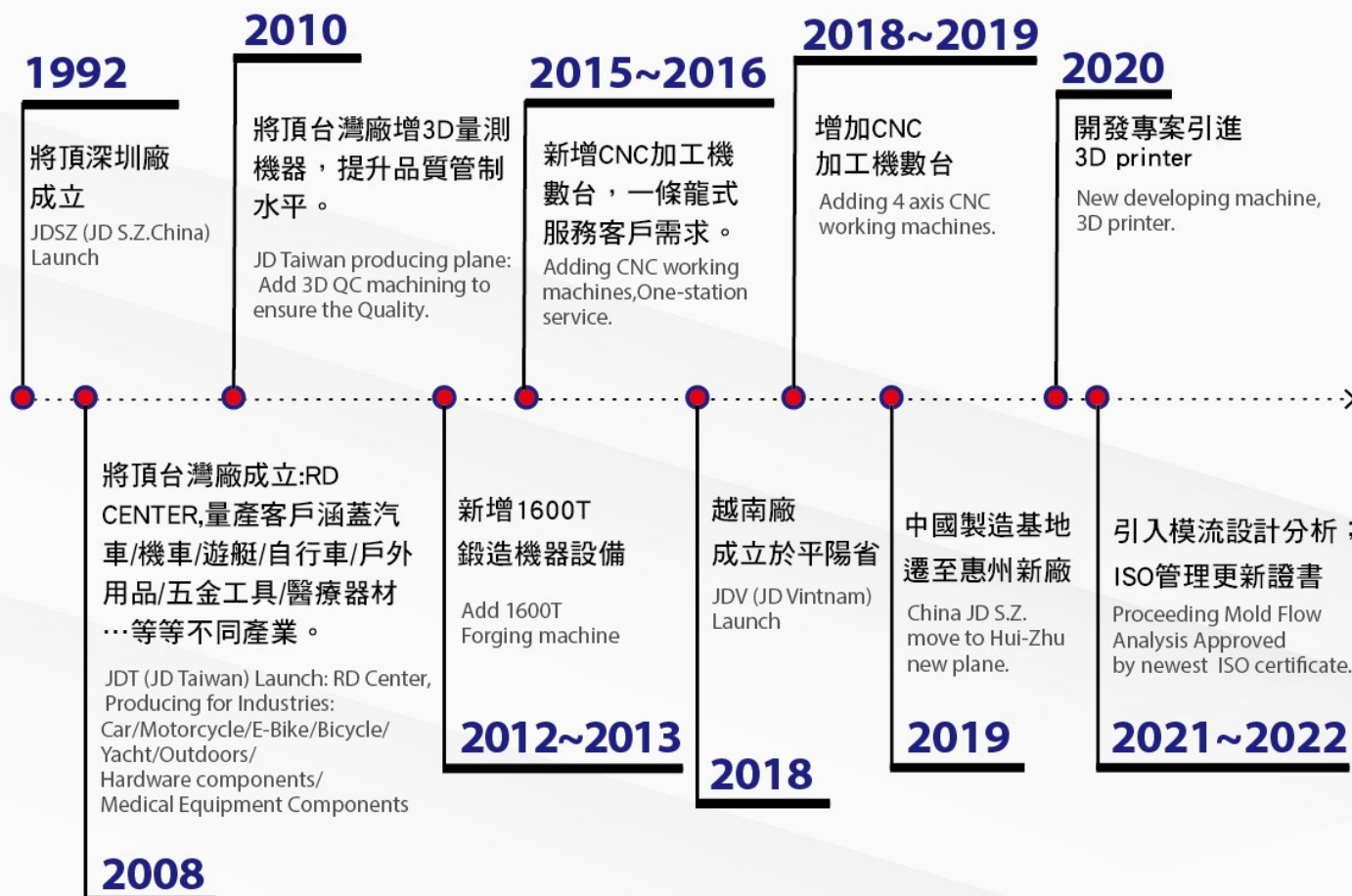


越南工廠 /Vietnam Factory

- >2018年創立/Established in 2018
- >廠區面積20,000平方米/20000SQM
- >員工100位/100staffs

大事紀

HISTORY OF DEVELOPMENT



客製化流程

CUSTOMIZATION PROCESS



PRODUCTION MACHINES



1600T Forging Machine

1600T 鍛造機



Working sections : CNC & Molding station

工廠設備



RD & QUALITY MEASURING MACHINES



3D Printer

3D打印機



3D Coordinate Measuring Machine

三次元測量儀



2D Coordinate Measuring Machine

二次元精度投影機



CONTENT

BICYCLE PARTS / E BIKE PARTS 04

(A)Frame : Dropout, Hanger,

Sliding dropout & hanger / JD UDRH / Adjustable dropout /
International Standard Disc Mount /Post mount / Flat mount /
Horizontal Dropout / Road bike Dropout /Shock mount/
Head tube/ Hanger/ Link /Link bracket/Yoke/ Bridges /
Gusset/ Button bracket / Motor Bracket

(B) Fork : Dropout /Crown of fork

(C) Others: Brake Caliper/ Sprocket

CAR/MOTORCYCLE PARTS 11

Piston / Rims/Brake Caliper/Brake Lever/
Light holder/Link

CUSTOMIZED PARTS 15

BICYCLES PARTS

FRAME DROPOUT, HANGER

自行車用: 車架勾爪 & 吊耳

SLIDING DISC BRAKE DROPOUT & SUPPORT KIT /// 滑動式勾爪&零配件

New

➤➤➤ 9D-0286 & 9T-0144

➤➤➤ 9D-0275 & 9T-0141

➤➤➤ 9D-0272 & 9T-0140 & 9K-0479

➤➤➤ 9D-0290 & 9T-0145

SLIDING DISC BRAKE DROPOUT & HANGER:

Easy to adjust the chain or belt on bikes.

滑動式勾爪/吊耳設計：

調整鏈條或皮帶時，簡易方便。

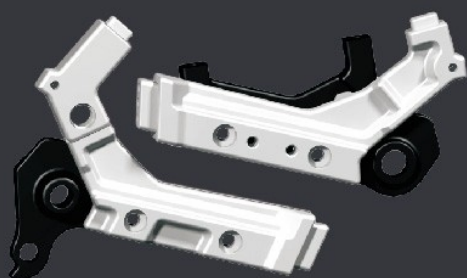
9D-0286 & 9T-0144



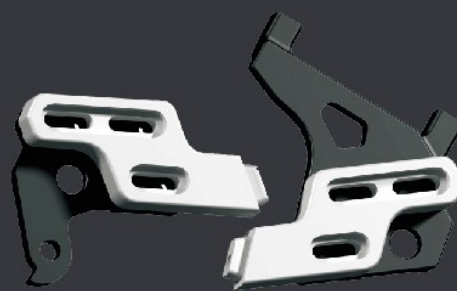
9D-0275 & 9T-0141



9D-0272 & 9T-0140 & 9K-0479



9D-0290 & 9T-0145



9D-0288 & 9K-0277-4 & T-0065-4



9D-0271 & 9K-0445-1 & 9K-0317



9D-0277 & T-0033



9D-0300 & 9K-0317 & 9K-0445-1



JD UDRH DROPOUT & HANGER /// JDUDRH 勾爪&吊耳

New

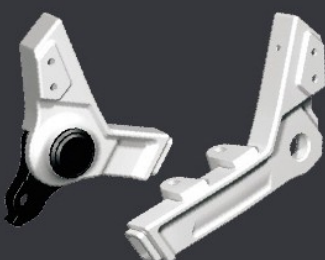
- | | |
|-------------|--------------|
| ➤➤➤ 9D-0295 | ➤➤➤ 9D-0299 |
| ➤➤➤ 9D-0296 | ➤➤➤ 9D-0302 |
| ➤➤➤ 9D-0297 | ➤➤➤ 9D-0303 |
| ➤➤➤ 9D-0298 | ➤➤➤ & T-0205 |

UDRH AF Dropout & hanger:
 Universal Al Forging Dropout & Hanger
 All made by Al Forging Materials.
 通用型勾爪/吊耳設計，全鋁鍛造系列。

9D-0295 & T-0205



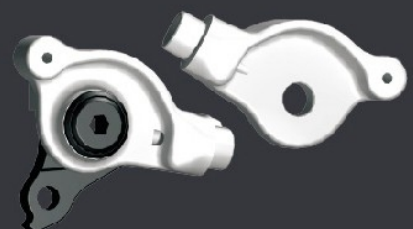
9D-0296 & T-0205



9D-0297 & T-0205



9D-0298 & T-0205



9D-0299 & T-0205



9D-0302 & T-0205



9D-0303 & T-0205

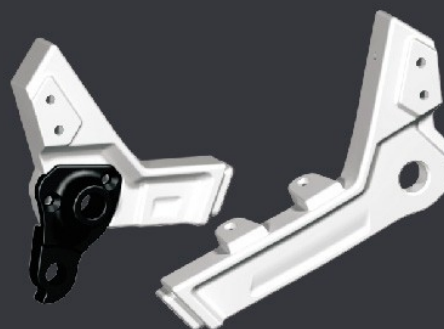


DISC BRAKE DROPOUT & HANGER /// 碟煞勾爪&吊耳

9D-0301 & 9T-0101



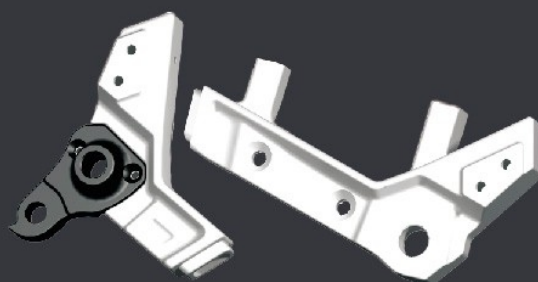
9D-0274 & 9T-0143



9D-0278 & T-0034A



9D-0284 & 9T-0143



9D-0201-5 & 9T-0101



9D-0281 & 9T-0117-1



9D-0202 & T-0051

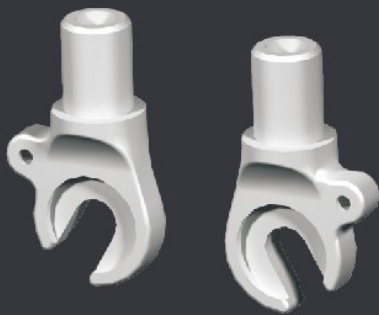


9D-0276

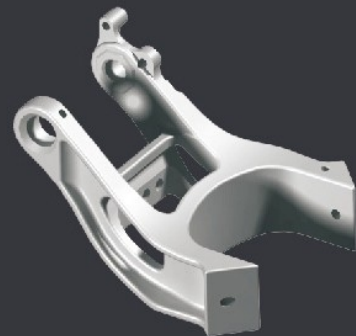


FORK DROPOUT, YOKE, LINK, MOTOR BRACKET & etc.
 /// 前叉勾爪、避震車架配件、馬達座&其他零配件

9E-0030



9H-0083



9E-0054



9Q-0177



9E-0045



9Q-0390



9H-0045-1



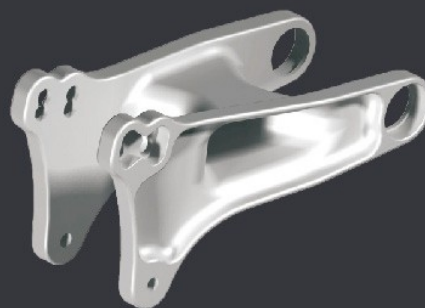
9Q-0038



9H-0085



9H-0089



9H-0087



9H-0065



9H-0151



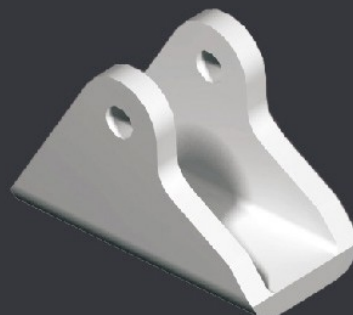
9H-0211-1



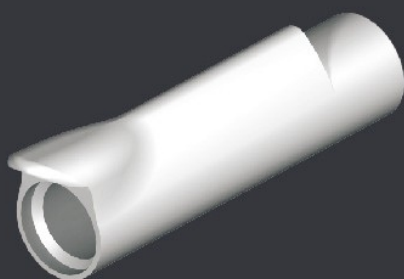
9H-0086



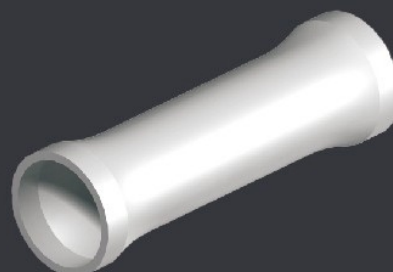
9K-0328



9H-0074



9A-0105



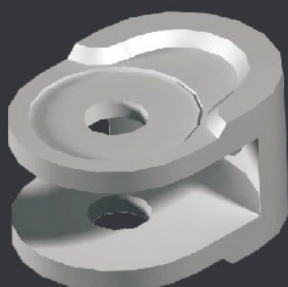
9Q-0184



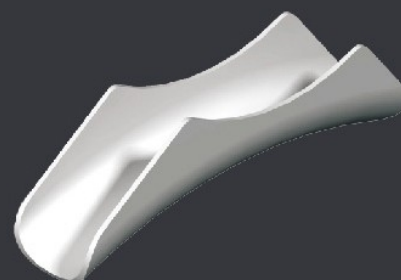
9Q-0180



9Q-0166



9B-0221



9H-0131



9C-0072



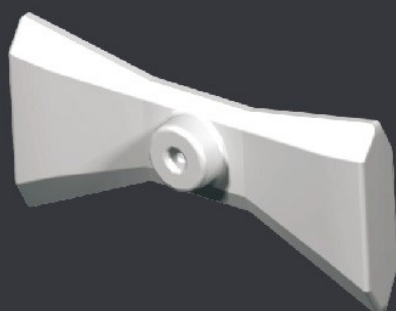
9C-0076



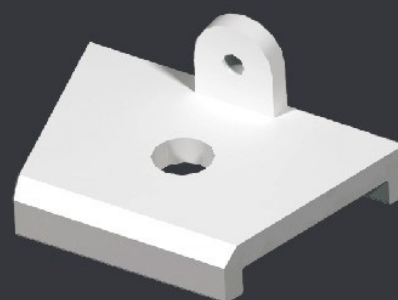
9H-0084



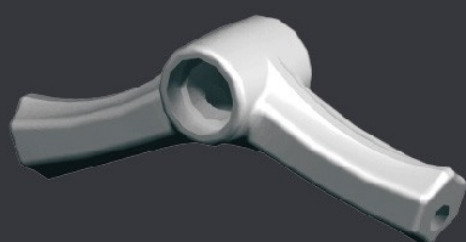
9K-0333



9K-0025



9Q-0205



9K-0334



9K-0329

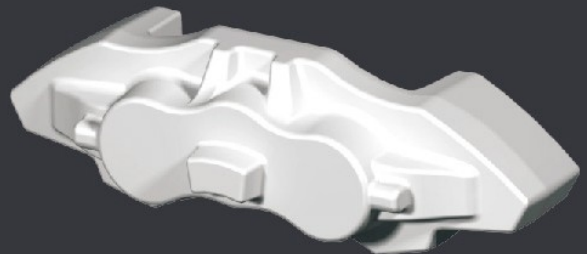


9K-0322

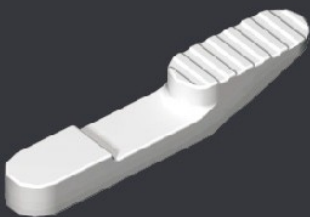


CAR PARTS

9H-0360-1



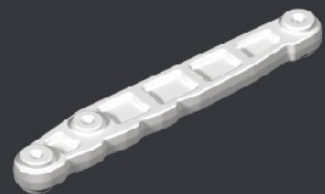
9H-0032



9H-0048



9H-0400A



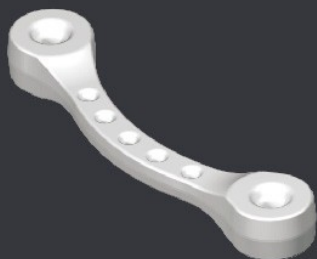
9H-0155



9H-0355-15



9H-0400B



9H-0400C



9H-0400D



9H-0407B

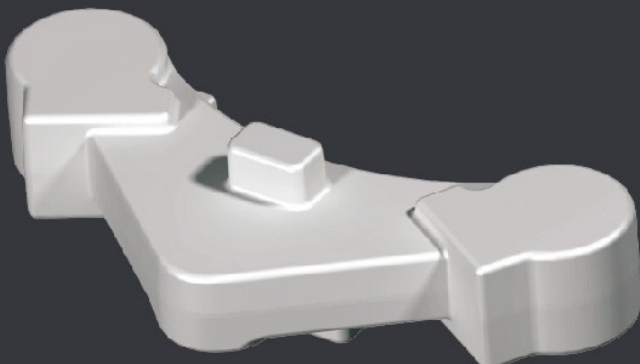


9H-0407A

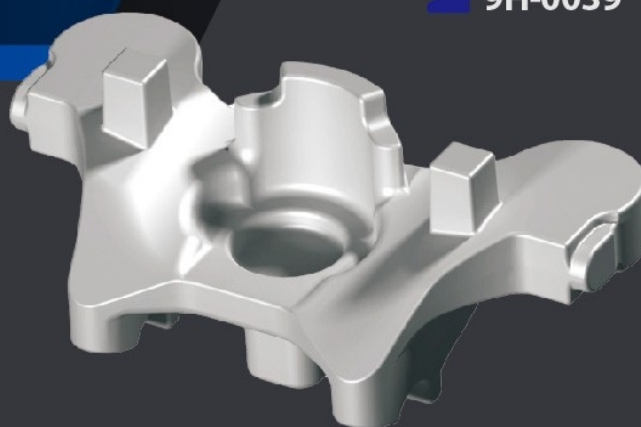


MOTORCYCLE PARTS

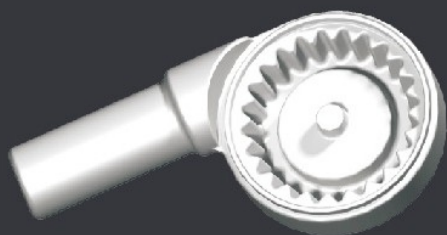
9H-0038



9H-0039



9H-0019



9H-0021



9H-0026



9H-0029A



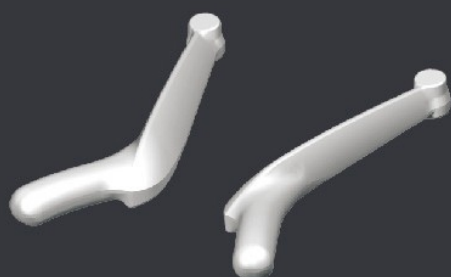
9H-0029B



9H-0030



9H-0036



9H-0060



9H-0081



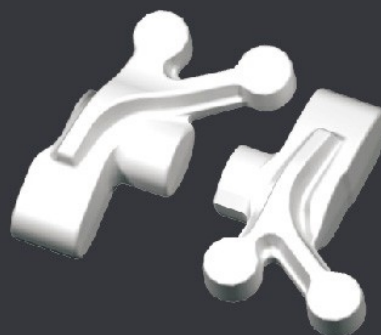
9H-0081



9H-0100



9H-0153&9H-0154



9H-0315A



9H-0327A



9H-0327B



9H-0332A



9H-0336



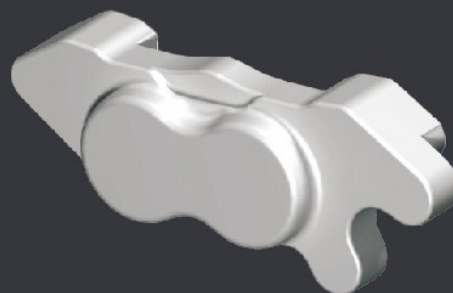
9H-0342A



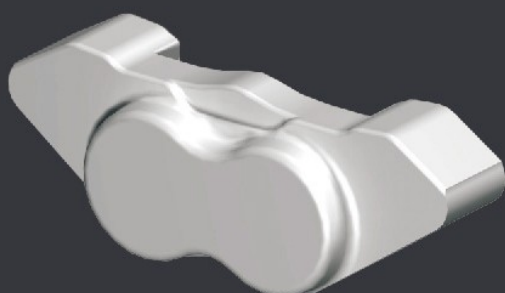
9H-0373



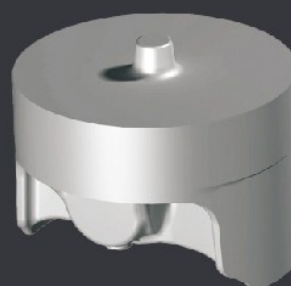
9H-0375A



9H-0375B



9P-0650-1



■ CUSTOMIZED PARTS 客製化鍛件

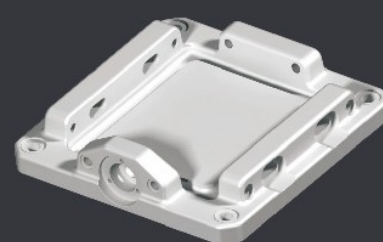
9H-0002A



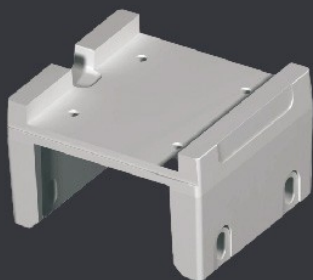
9H-0042A



9H-0054



9H-0055



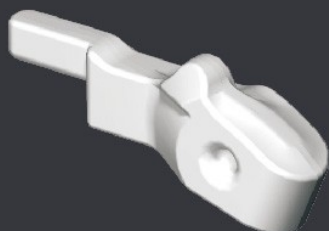
9H-0066



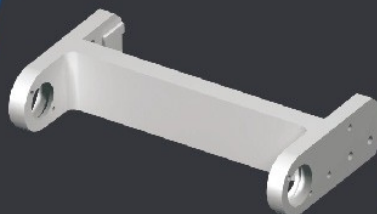
9H-0076



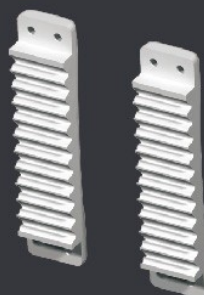
9H-0156



9H-0197



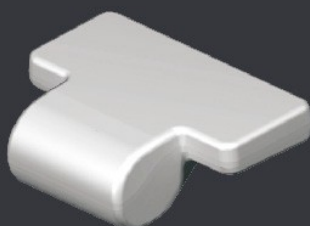
9H-0273A



9H-0311



9H-0329



9H-0330



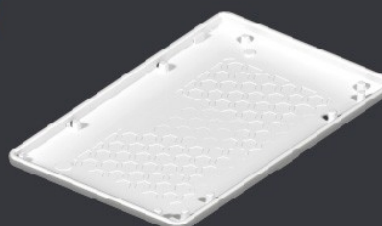
9H-0337



9H-0368A



9Q-0355



有關將頂科技

Company Introduction



將頂科技擁有近30年技術與經驗；自1992年大陸設廠至今，由精密鍛造錶殼，進而因應市場需求逐漸轉型，為鍛造各種鈦/鋁/銅/鐵材質之金屬鍛造品；於2004年進一步投資4500萬人民幣在深圳設立占地2萬平方米新廠，於2005年6月5日正式投產。將頂科技深圳廠採用先進的機器設備，包含精密鍛造機1600T、1000T、600T&400T等。另有沖壓機及多量精密機器設備，提供客戶最連貫性的服務。主要產品為自行車零件、汽車零件、機車零件、以及電子零件等；現已增加至各種領域的OEM&ODM客製化產品合作開發&製造量產。

我們具備自行車開發的競爭優勢，從初期設計圖紙繪製，模具製作試樣，一直到產品試產與量產完成，均在本廠進行，產品行銷中國內地，更延伸至東南亞&歐美等國際市場。

將頂科技積極拓展市場版圖及增強競爭力，於2008年再次投資台幣12億5千萬在台灣設廠且設定為全球研發總部，將台灣研發技術推廣到海外，與世界同步。於2018年將頂科技在越南設廠並成立海外分公司-越南頂峰國際；地點坐落於平陽省的胡志明市近郊，擁有佔地4萬平方米基地，是將頂科技在東南亞的製造中心；就近提供服務及效率以滿足客戶在地化製造的鍛造件需求。

將頂科技始終以高品質、重服務，講信譽為經營宗旨，秉持追求與分享的工作精神，致力於製造金屬產鍛件產品，並可依據客戶需求來提供客製化服務，集合研究/開發/生產的能力，以穩紮穩打的態度，邁向全世界及未來，爭取為業界做出卓越貢獻。

Jiang Ding has nearly 30 years of technology experience; since the establishment of a factory in mainland China in 1992, it has gradually transformed from precision forging watch cases to forging of various materials, ie. titanium/aluminum/copper/iron, etc; in 2004 A further investment of 45 million RMB was made in Shenzhen to set up a new factory covering an area of 20,000 square meters, which was officially put into operation on June 5, 2005. Jiang Ding Shenzhen Factory adopts advanced machines and equipment, including precision forging machines 1600T, 1000T, 600T & 400T. There are also stamping machines and a large number of precision machinery and equipment to provide customers with the most consistent service. The main products are bicycle parts, auto parts, and electronic parts, etc.; now it has increased to various fields of OEM & ODM customized product cooperative development & manufacturing mass production.

We have a competitive advantage in bicycle development. From initial design drawing, mold making samples, to product trial production and mass production, all are carried out in our factory. The products are sold in mainland China, and even extend to Southeast Asia, Europe, America and other international markets.

Jiang Ding actively expands its market territory and enhances its competitiveness. In 2008, it invested NTD 1.25 billion to set up a factory in Taiwan and set it up as a global R&D headquarters to promote Taiwan's R&D technology overseas and keep pace with the world. In 2018, Jiang Ding set up a factory in Vietnam and established an overseas branch – Top Point International Co., Ltd. which is located in the suburbs of Ho Chi Minh City, PingYang Province, with an area of 40,000 square meters. It is the manufacturing center of Jiang Ding in Southeast Asia; nearby Provide service and efficiency to meet customers' demand for forging parts locally.

Jiang Ding always takes high quality, service and reputation as its business tenet. It is committed to manufacturing metal forging products, and can provide customized services according to customers' needs, integrating research/development/Production capacity, with a steady and steady attitude, towards the world and the future, and hopefully to make outstanding contributions to the industry.



將頂科技有限公司

JIANG DING TECHNOLOGY CO., LTD.

74562 台南市安定區港尾里港仔尾64-8號

NO.64-8, Gangziwei, Anding Dist, Tainan City 74562 Taiwan

TEL / +886-6-5976037

FAX / +886-6-5976035

將頂科技(惠州)有限公司

JIANG DING TECHNOLOGIES (HUI ZHOU) CO., LTD.

惠州市惠陽區平潭鎮沿路街插花工業區

CHA HUA ARRANGEMENT INDUSTRIAL ZONE, YAN LU STREET,
PINGTAN TOWN, HUI YANG DISTRICT, HUI ZHOU CITY, 516259 CHINA

TEL / +86-752 - 6539936 / +86-752- 6539989

頂峰國際(越南)有限公司

TOP POINT INTERNATIONAL CO., LTD

平陽省寶鵬區B6 B5 CN, B6 B6, CN, N14, 寶鵬工業園

Baopeng District, Pingyang Province B6 B5 CN, B6 B6, CN, N14,

Baopeng Industrial Park, Vietnam

TEL / +84-2742-222570

FAX / +84-2742-222571



Carbon Border Adjustment Mechanism